

Porcelain Veneers & Porcelain Crowns

the smile you've always wanted

Are you happy with your smile? Do you wish you had better-looking teeth without having to spend all of the time needed for braces (orthodontics)? Porcelain veneers have been referred to as instant orthodontics because they can straighten smiles, reshape your teeth, and close gaps. Best of all, you can have the smile of a lifetime in as little as two office visits.

If you have any of these concerns about your teeth, then porcelain veneers could be the answer to your smile dilemma:

- Spaces between the teeth (diastemas)
- Broken or chipped teeth
- Unsightly, stained or washed-out fillings
- Permanently stained or discolored teeth
- Misshapen or crooked teeth
- Dark, yellow or stained teeth

To design a beautiful, natural-looking smile takes preparation and planning. Dr. Joyce Bassett has undergone advanced training to successfully design the shape, size and alignment of your teeth and associated tissues. Producing a perfect smile is truly an art, as each person is an individual. The components that produce a beautiful smile are unique and require great attention to detail on a tooth-by-tooth basis.

What are porcelain veneers?

Porcelain veneers, sometimes referred to as laminates, are very thin porcelain facings. They are used to change the shape, color, size, and arrangement of your teeth.

How do I know how many veneers I will need?

The easiest way to answer this is to ask you to look in the mirror. Smile your natural smile and then count the number of teeth you see in your reflection. The number may range from eight to 16 and as little as one or two; it all really depends upon your individual smile and your cosmetic expectations. There are a number of options you can choose from, and this will all be discussed at your cosmetic consultation.

Do all porcelain veneers look the same?

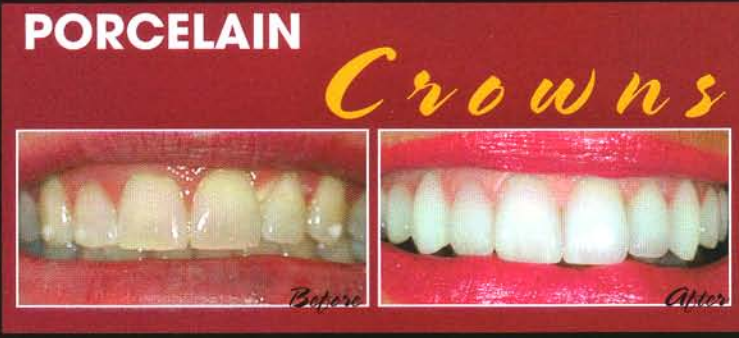
Because your new smile is being custom-designed, it also means that you will be able to choose the look for your veneers. We will be able to show you various shapes that your porcelain veneers can be. Their appearance can range from sporty, to natural, or to a look of Hollywood.

Crowns that look like real teeth!

While porcelain veneers offer dazzling aesthetic results, they require adequate remaining tooth structure for their support. When there is not enough tooth structure left, or the chewing demands in the mouth are too great for laminates, a stronger, more extensive restoration is needed. Here we need all-porcelain crowns. With advances in the strength and durability of ceramics, crowns can now be made entirely out of porcelain. They can be made to look just like your natural teeth, or they can create brand-new, beautiful teeth for you just like veneers. All-ceramic crowns are placed around the whole tooth, which gives the tooth more strength. They are the most life-like of all full crown type restorations. Unlike old metal crowns, metal-free crowns improve the tooth without the ugly "black line" at the gum line associated with traditional metal crowns. In fact, they can be very natural-looking, long-lasting replacements for any existing all-metal or porcelain-and-metal crowns you may already have. They are internally shaded, and show three times more translucency, thereby dramatically improving their natural appearance. Being one of the most life-like full crown restorations, metal-free crowns help to restore the tooth's own health and strength with a naturally subtle and beautiful result.

Porcelain Onlays ...

When individual back teeth are broken down and there is still healthy tooth structure left, porcelain onlays are used. These are the strongest and longest lasting of all the aesthetic back teeth restorations. The benefits of this restoration is that it is strong, looks natural, conservative, and it protects the nerve of the tooth.



JOYCE BASSETT 
D.D.S., F.A.G.D.

4921 East Bell Road, Suite 206
Scottsdale, Arizona 85254

Phone **602.867.2888**
E-Mail drmouthy@aol.com
Website www.drbbassett.com